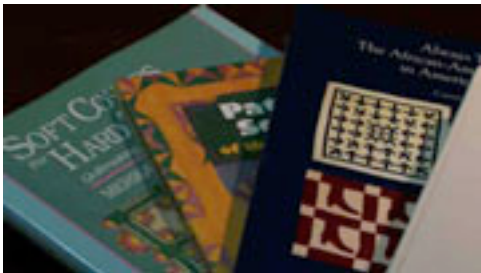




- *Every effort has been made to provide correct and accurate information.*
- *The institutions and artists have generously granted permission to use their images. They hold the copyrights to their images.*
- *For personal use only. For permission to reproduce multiple copies, please contact us at [contact@whyquiltsmatter.org](mailto:contact@whyquiltsmatter.org).*

## Episode 9

### *Quilt Scholarship: Romance and Reality*



Quilt books  
Photo by Focal Point



*Bible Scenes Quilt*  
Made by a member of the Drake family  
c. 1900-1910  
Cotton, appliquéd  
76 ½" x 71"  
Photo by Geoffrey Carr  
From *Always There: The African-American Presence in American Quilts*  
The Kentucky Quilt Project, Inc., 1992  
University of Louisville Archives and Records Center  
Louisville, Kentucky  
[louisville.edu/library/archives](http://louisville.edu/library/archives)



*Ohio Star (detail)*

Maker unknown

1860-1880

Cotton or calico, muslin

95" x 106"

Item number 1983.157

The Charleston Museum

Charleston, South Carolina

[www.charlestonmuseum.org](http://www.charlestonmuseum.org)



*Caesar's Crown*

Betty Jones Watson

c. 1850

Cotton

107" x 105"

Item number 1960.021

The Charleston Museum

Charleston, South Carolina

[www.charlestonmuseum.org](http://www.charlestonmuseum.org)



*Sampler Quilt*

Maker unknown

c. 1840

Cotton

Photo by Geoffrey Carr

Formerly in the collection of Shelly Zegart



Brackman workshop

May 22, 1994

Photo by Lee Kogan

American Folk Art Museum

New York, New York

[www.folkartmuseum.org](http://www.folkartmuseum.org)



*Presentation Quilt*

By the members of The Young Ladies Sewing Society for Susan Elizabeth Daggett

1871

Cotton

68" x 76"

Photo by Geoffrey Carr

Formerly in the collection of Shelly Zegart

Collection of The Art Institute of Chicago

Chicago, Illinois

[www.artic.edu/aic/collections/artwork/category/40](http://www.artic.edu/aic/collections/artwork/category/40)

2 details follow



Historic photograph of group of women with a quilt

In upcoming book by Janet E. Finley, Schiffer Publishing, Atglen, Pennsylvania; late 2012

Collection of Janet E. Finley



Historic photograph of a man, woman and child with a quilt

In upcoming book by Janet E. Finley, Schiffer Publishing, Atglen, Pennsylvania; late 2012

Collection of Janet E. Finley



Historic photograph of a woman in bed covered with a quilt

In upcoming book by Janet E. Finley, Schiffer Publishing, Atglen, Pennsylvania; late 2012

Collection of Janet E. Finley



*Aunt Jane of Kentucky* book

By Eliza Calvert Hall

Little Brown and Company, Boston, 1907



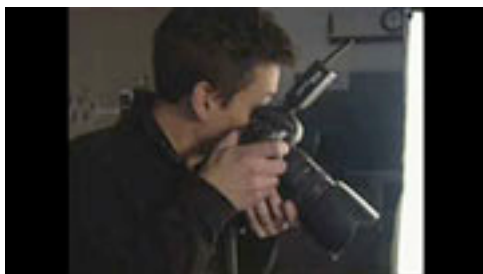
*Stitched from the Soul: Slave Quilts from the Ante-Bellum South*  
Exhibition publication  
Gladys Marie Fry, Ph.D.  
1989  
Museum of American Folk Art  
New York, New York  
Photo by Geoffrey Carr



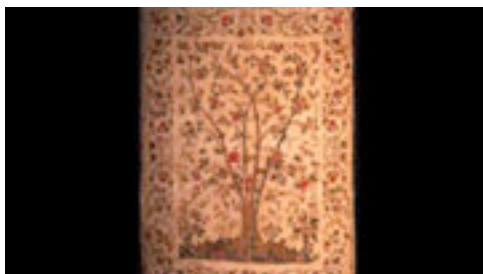
*Hidden in Plain View: A Secret Story of Quilts and the Underground Railroad*  
Jacqueline L. Tobin and Raymond G. Dobard, Ph.D.  
Doubleday, 1999  
Photo by Geoffrey Carr  
Courtesy of Shelly Zegart



Research room used for stylistic analysis of quilts  
B-roll from *Behind the Scenes Look at The International Quilt Study Center and Museum*  
University of Nebraska-Lincoln  
Lincoln, Nebraska  
[www.quiltstudy.org](http://www.quiltstudy.org)



B-roll from Education and Research  
The International Quilt Study Center and Museum  
University of Nebraska-Lincoln  
Lincoln, Nebraska  
[www.quiltstudy.org](http://www.quiltstudy.org)



*Tree of Life* palampore  
Maker unknown  
Late 18<sup>th</sup> century  
Cotton  
88 ½" x 123"  
Item number 1958.019  
The Charleston Museum  
Charleston, South Carolina  
[www.charlestonmuseum.org](http://www.charlestonmuseum.org)





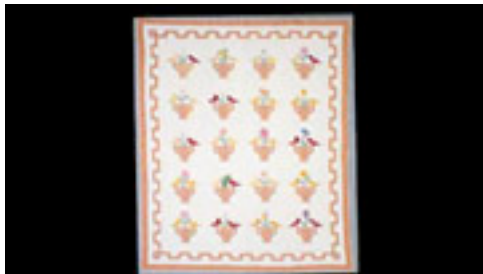
*Mariners Quilt*

Maker unknown

Cotton

Photo by Geoffrey Carr

Formerly in the collection of Shelly Zegart



*Garden Bouquet*

Maker unknown

c. 1932

Cotton

81" x 94"

From *The American Quilt*, Roderick Kiracofe,  
Clarkson Potter, 2004

Photo by Sharon Risedorph

Courtesy of Roderick Kiracofe



*The Hitch*

Kay Khan

Quilted, pierced, appliquéd and machine-stitched, constructed  
16 ¼" x 26" x 21"

Photo by Joseph Coscia

Collection of John M. Walsh, III



One of a group of slides accompanying a lecture by Virginia  
Gunn, *Romance and Reality: A Century of Quilt Scholarship*,  
part of *Louisville Celebrates the American Quilt*  
February 1993

From *A Portfolio of Great American Quilts*

Published in *Expanding Quilt Scholarship*,  
Kentucky Quilt Project, Inc., 1994



One of a group of slides accompanying a lecture by Virginia  
Gunn, *Romance and Reality: A Century of Quilt Scholarship*,  
part of *Louisville Celebrates the American Quilt*  
February 1993

From *A Portfolio of Great American Quilts*

Published in *Expanding Quilt Scholarship*,  
Kentucky Quilt Project, Inc., 1994



Technical analysis of quilts  
From *Behind the Scenes Look at The International Quilt Study Center and Museum*  
University of Nebraska-Lincoln  
Lincoln, Nebraska  
[www.quiltstudy.org](http://www.quiltstudy.org)



Sandra Mitchell archives  
Courtesy of Shelly Zegart



Photograph from a lecture  
Shelly Zegart archives



Tokyo International Great Quilt Festival  
January 2007  
Photo by Kanji Ono  
Tokyo, Japan



Historic photograph of group of women holding a quilt  
In upcoming book by Janet E. Finley, Schiffer Publishing,  
Atglen, Pennsylvania; late 2012  
Collection of Janet E. Finley



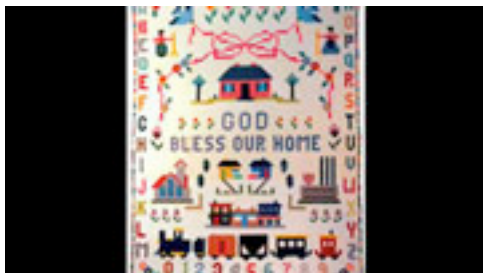
One of a group of slides accompanying a lecture by Virginia Gunn, *Romance and Reality: A Century of Quilt Scholarship*, part of *Louisville Celebrates the American Quilt* February 1993  
 From *Quilter's Journal*  
 Published in *Expanding Quilt Scholarship*, Kentucky Quilt Project, Inc., 1994



Quilt ID Day  
 B-roll from The International Quilt Study Center and Museum  
 University of Nebraska-Lincoln  
 Lincoln, Nebraska  
[www.quiltstudy.org](http://www.quiltstudy.org)



Academic Symposium 2007  
 B-roll from The International Quilt Study Center and Museum  
 University of Nebraska-Lincoln  
 Lincoln, Nebraska  
[www.quiltstudy.org](http://www.quiltstudy.org)



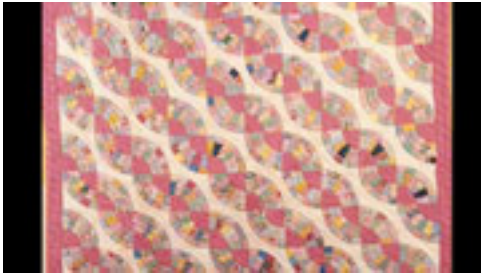
*God Bless Our Home*  
 Mary Kreyenhangen  
 c. 1940  
 Cotton  
 Photo by Geoffrey Carr  
 Formerly in the collection of Shelly Zegart



*Variable Star*  
 Sarah Legare Simmons or Cecelia Westmore King  
 Late 19<sup>th</sup> century  
 Cotton  
 43 1/2" x 48"  
 Item number 1987.034  
 The Charleston Museum  
 Charleston, South Carolina  
[www.charlestonmuseum.org](http://www.charlestonmuseum.org)



*Pineapple Log Cabin*  
 Maker unknown  
 c. 1920  
 Cotton  
 78" x 88"  
 Collection of Mike Doilney



*Mohawk Trail*  
 Maker unknown  
 c. 1935  
 Cotton  
 80" x 85"  
 Photo by Nagamitsu Endo  
 Collection of Victoria Hoffman



*Tree of Life*  
 Maker unknown  
 c. 1880  
 Cotton  
 76 ½" x 76 ½"  
 Item number 2010.04.037  
 Oregon Quilt Project  
 Collection of Bill Volckening  
 Detail follows

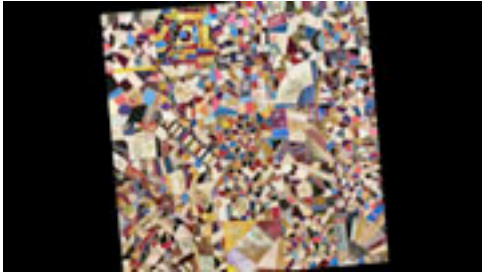


Woman spinning wool  
 c. 1906  
 Library of Congress  
 Prints & Photographs Division  
 Washington, D.C.  
 Item number LC-USZ62-20071  
[www.loc.gov/pictures](http://www.loc.gov/pictures)



*Crazy Quilt*  
 Lizzie Hollinger  
 1885  
 Silk, velvet  
 86" x 103"  
 Photo by Geoffrey Carr  
 Formerly in the collection of Shelly Zegart





*Crazy Quilt Top*  
 Maker unknown  
 c. 1885  
 Velvet, silks, ribbons  
 62 ½" x 61 ½"  
 Item number 1922.192  
 The Charleston Museum  
 Charleston, South Carolina  
[www.charlestonmuseum.org](http://www.charlestonmuseum.org)



*Crazy Quilt*  
 Julia M. Pollitzer  
 1883  
 Silks, velvets, cotton  
 59" x 61 ½"  
 Item number 1930.246.001  
 The Charleston Museum  
 Charleston, South Carolina  
[www.charlestonmuseum.org](http://www.charlestonmuseum.org)



*Crazy Quilt*  
 Catherine Hume Simons  
 1885-1890  
 Silks, velvets  
 66" x 65"  
 Item number 1946.016  
 The Charleston Museum  
 Charleston, South Carolina  
[www.charlestonmuseum.org](http://www.charlestonmuseum.org)

*Hidden in Plain View: A Secret Story of Quilts  
 and the Underground Railroad again*



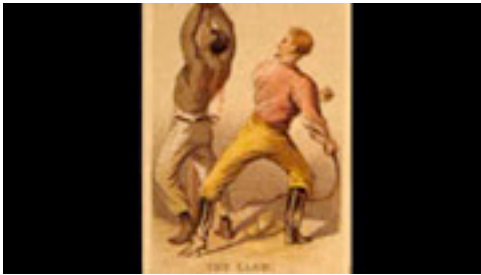
*The Parting – Buy us too*  
 c. 1863  
 Library of Congress  
 Prints & Photographs Division  
 Washington, D.C.  
 Item number LC-USZ62-41838  
 Courtesy of Carnegie Center for Art and History  
 New Albany, Indiana  
[www.loc.gov/pictures](http://www.loc.gov/pictures)



A slave auction  
1861  
Library of Congress  
Prints & Photographs Division  
Washington, D.C.  
Item number LC-USZ62-2582  
Courtesy of Carnegie Center for Art and History  
New Albany, Indiana  
[www.loc.gov/pictures](http://www.loc.gov/pictures)



Negroes For Sale  
January 1842  
Library of Congress  
Prints & Photographs Division  
Washington, D.C.  
Courtesy of Carnegie Center for Art and History  
New Albany, Indiana  
[www.loc.gov/pictures](http://www.loc.gov/pictures)



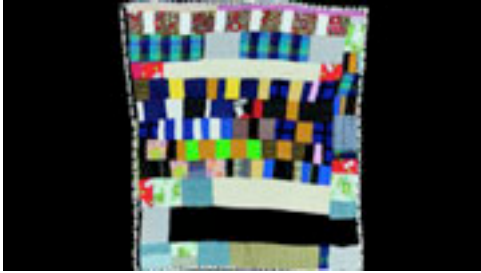
*The Lash*  
c. 1863  
Photo by H. L. Stephens  
Library of Congress  
Prints & Photographs Division  
Washington, D.C.  
Item number LC-USZC4-2524  
Courtesy of Carnegie Center for Art and History  
New Albany, Indiana  
[www.loc.gov/pictures](http://www.loc.gov/pictures)



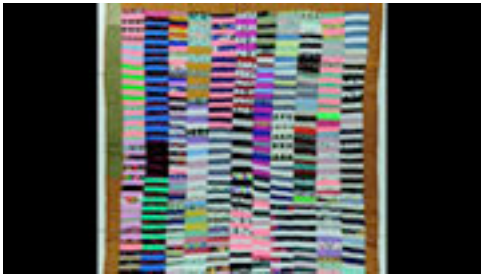
Slaves working in a field  
Library of Congress  
Prints & Photographs Division  
Washington, D.C.  
Courtesy of Carnegie Center for Art and History  
New Albany, Indiana  
[www.loc.gov/pictures](http://www.loc.gov/pictures)



Inspection and sale of a negro  
1854  
Library of Congress  
Prints & Photographs Division  
Washington, D.C.  
Item number LC-USZ62-15392  
Courtesy of Carnegie Center for Art and History  
New Albany, Indiana  
[www.loc.gov/pictures](http://www.loc.gov/pictures)



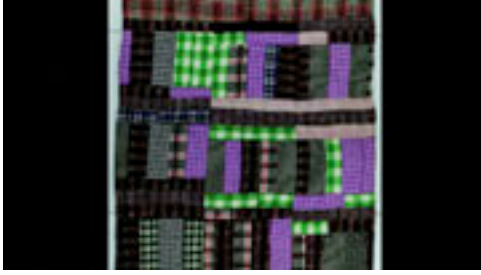
*Piano Quilt*  
Idabell Bester  
c. 1980  
Knit  
71" x 61"  
Item number 2000.004.0014  
Robert and Helen Cargo Collection  
The International Quilt Study Center & Museum  
University of Nebraska-Lincoln  
Lincoln, Nebraska  
[www.quiltstudy.org](http://www.quiltstudy.org)



*Strip Quilt*  
Idabell Bester  
c. 1993  
Cotton  
85" x 74"  
Item number 2000.004.0017  
Robert and Helen Cargo Collection  
The International Quilt Study Center & Museum  
University of Nebraska-Lincoln  
Lincoln, Nebraska  
[www.quiltstudy.org](http://www.quiltstudy.org)



*Strip Quilt or Bridge Across the River*  
RSVP Club  
c. 1980-1990  
Cotton blend  
90" x 77"  
Item number 2000.004.0111  
Robert and Helen Cargo Collection  
The International Quilt Study Center & Museum  
University of Nebraska-Lincoln  
Lincoln, Nebraska  
[www.quiltstudy.org](http://www.quiltstudy.org)



*Strip Quilt*  
 Jeff Martin  
 c. 1975-1995  
 Wool  
 78" x 59"  
 Item number 2000.004.0060  
 Robert and Helen Cargo Collection  
 The International Quilt Study Center & Museum  
 University of Nebraska-Lincoln  
 Lincoln, Nebraska  
[www.quiltstudy.org](http://www.quiltstudy.org)



*Always There: The African-American Presence in American Quilts* cover  
 The Kentucky Quilt Project, Inc., 1992



*Fleur de Lis Quilt*  
 Sara Miller  
 c. 1900  
 Cotton  
 82 ½" x 82 ½"  
 From *Always There: The African-American Presence in American Quilts*  
 The Kentucky Quilt Project Archives  
 University of Louisville Archives & Records Center  
 Louisville, Kentucky  
[louisville.edu/library/archives](http://louisville.edu/library/archives)



*Reel Quilt or Star Quilt*  
 Made by slave labor on a Sedalia, Missouri plantation  
 1844  
 Cotton  
 113" x 104"  
 From *Always There: The African-American Presence in American Quilts*  
 The Kentucky Quilt Project Archives  
 University of Louisville Archives & Records Center  
 Louisville, Kentucky  
[louisville.edu/library/archives](http://louisville.edu/library/archives)





*Original Whig Rose Quilt*

Made by slave labor on the White family  
plantation near Richmond, Kentucky

c. 1860

Cotton

102" x 82 ½"

From *Always There: The African-American  
Presence in American Quilts*

The Kentucky Quilt Project Archives

University of Louisville Archives & Records Center

Louisville, Kentucky

[louisville.edu/library/archives](http://louisville.edu/library/archives)



*Liberty Medallion*

Elizabeth Hobbs Keckley

c. 1870

Silk

85 ½" x 85 ½"

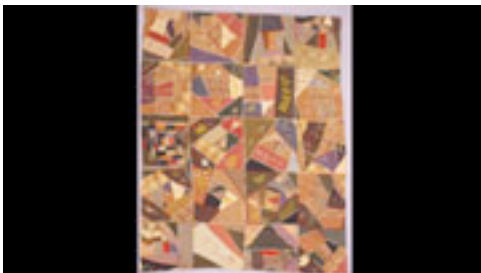
From *Always There: The African-American  
Presence in American Quilts*

The Kentucky Quilt Project Archives

University of Louisville Archives & Records Center

Louisville, Kentucky

[louisville.edu/library/archives](http://louisville.edu/library/archives)



*Crazy Quilt*

Mima Thompson Perkins

c. 1888-1890

Wool

82" x 61"

From *Always There: The African-American  
Presence in American Quilts*

The Kentucky Quilt Project Archives

University of Louisville Archives & Records Center

Louisville, Kentucky

[louisville.edu/library/archives](http://louisville.edu/library/archives)



*Lady's Shoe Quilt*

Fanny Cork

c. 1890

Cotton

67" x 93"

From *Always There: The African-American Presence in American Quilts*

The Kentucky Quilt Project Archives

University of Louisville Archives & Records Center

Louisville, Kentucky

[louisville.edu/library/archives](http://louisville.edu/library/archives)



*Have a Seat Quilt*

Dorothy Holden

c. 1990

Silk foulard, cotton, synthetic fabrics, men's ties

70" x 57"

From *Always There: The African-American Presence in American Quilts*

The Kentucky Quilt Project Archives

University of Louisville Archives & Records Center

Louisville, Kentucky

[louisville.edu/library/archives](http://louisville.edu/library/archives)



*Reclamation Quilt, Memory Series #2*

Carole Harris

1990

Cotton

72" x 50"

From *Always There: The African-American Presence in American Quilts*

The Kentucky Quilt Project Archives

University of Louisville Archives & Records Center

Louisville, Kentucky

[louisville.edu/library/archives](http://louisville.edu/library/archives)



*African Mask Adaption Quilt*

Dorothy Nelle Sanders

1976

Cotton, silk-screened, fabric paint

68 ½" x 86"

From *Always There: The African-American Presence in American Quilts*

The Kentucky Quilt Project Archives

University of Louisville Archives & Records Center

Louisville, Kentucky

[louisville.edu/library/archives](http://louisville.edu/library/archives)



Women shopping for fabric

International Quilt Festival

Photo by Richard Cunningham

Quilts, Inc. and International Quilt Festival

Houston, Texas

[www.quilts.com](http://www.quilts.com)

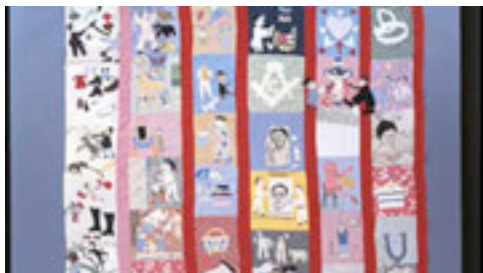


Quilting class

Quilts, Inc. and International Quilt Festival

Houston, Texas

[www.quilts.com](http://www.quilts.com)



*The Lynching Quilt*

Maker unknown

November 14, 1933

Cotton

Photo by Geoffrey Carr

Formerly in the collection of Shelly Zegart

Detail follows



Women shopping for fabric

International Quilt Festival

Photo by Richard Cunningham

Quilts, Inc. and International Quilt Festival

Houston, Texas

[www.quilts.com](http://www.quilts.com)



*Kentucky Quilts 1800-1900* banner  
1983  
The Kentucky Quilt Project Archives



Viewing a quilt exhibition  
1983  
The Kentucky Quilt Project Archives



*Kentucky Quilts 1800-1900* catalog cover  
The Kentucky Quilt Project, Inc., 1982



Page from *Kentucky Quilts 1800-1900*  
Photo by David Talbott  
The Kentucky Quilt Project, Inc., 1982  
4 more pages follow



Stack of quilt books  
Photo by Focal Point





B-roll by Focal Point  
Spalding University  
Louisville, Kentucky



The International Quilt Study Center and Museum  
University of Nebraska-Lincoln  
Lincoln, Nebraska  
[www.quiltstudy.org](http://www.quiltstudy.org)



B-roll by Focal Point  
Spalding University  
Louisville, Kentucky



*Year of the Quilt*  
*Masterworks from The American Folk Art Museum* exhibition  
October 5, 2010 - October 16, 2011  
American Folk Art Museum  
New York, New York  
[www.folkartmuseum.org](http://www.folkartmuseum.org)



*Quilts* book cover  
*Masterworks from The American Folk Art Museum*  
October 5, 2010 - October 16, 2011  
American Folk Art Museum  
New York, New York  
[www.folkartmuseum.org](http://www.folkartmuseum.org)



*Infinite Variety: Three Centuries of  
Red and White Quilts* exhibition  
March 25-30, 2011  
Park Avenue Armory  
American Folk Art Museum  
New York, New York  
[www.folkartmuseum.org](http://www.folkartmuseum.org)



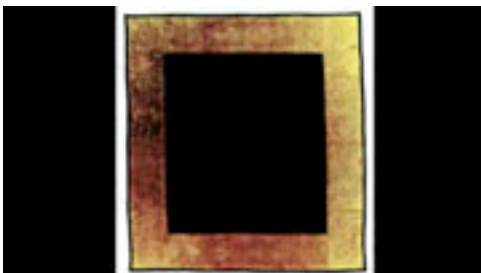
Stack of quilts  
Historic Locust Grove  
Louisville, Kentucky  
[www.locustgrove.org](http://www.locustgrove.org)



Quilt display  
Historic Locust Grove  
Louisville, Kentucky  
[www.locustgrove.org](http://www.locustgrove.org)



The Byron and Sara Rhodes Dillow  
Conservation Center isolation room  
B-roll from The International Quilt Study Center and Museum  
University of Nebraska-Lincoln  
Lincoln, Nebraska  
[www.quiltstudy.org](http://www.quiltstudy.org)



*Center Square*  
Maker unknown  
c. 1880-1900  
Cotton  
81" x 73"  
The International Quilt Study Center and Museum  
University of Nebraska-Lincoln  
Lincoln, Nebraska  
[www.quiltstudy.org](http://www.quiltstudy.org)



*Two-Sided Geometric Quilt*

Loretta P. Bennett

2003

Corduroy, velveteen

66" x 59"

From *Gee's Bend: The Architecture of the Quilt*

Paul Arnett, Tinwood Books, 2006

Courtesy of Matt Arnett

Photo by Pitkin Studio



*Map Quilt*

Maker unknown

1886

Silks, cotton

78 3/4" x 82 1/4"

Photo by Schecter Lee

Gift of Dr. and Mrs. C. David McLaughlin

Item number 1987.1.1

American Folk Art Museum

New York, New York

[www.folkartmuseum.org](http://www.folkartmuseum.org)



*Sacret Bibel Quilt Top*

Susan Arrowood

1875-1895

Cotton, silk, wool, ink with cotton embroidery

88 1/2" x 72"

Photo by Schecter Lee

Gift of the Amicus Foundation, Inc. and

Evelyn and Leonard Lauder

Item number 1986.20.1

American Folk Art Museum

New York, New York

[www.folkartmuseum.org](http://www.folkartmuseum.org)



*Pieties Quilt*

Maria Cadman Hubbard

1848

Cotton

88 1/2" x 81"

Photo by John Parnell

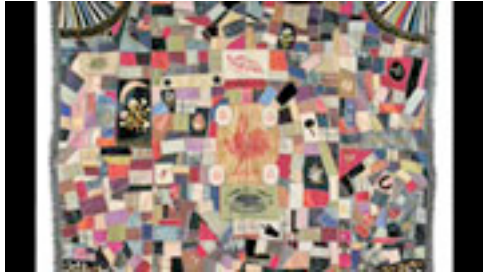
Gift of Cyril Irwin Nelson

Item number 1984.27.1

American Folk Art Museum

New York, New York

[www.folkartmuseum.org](http://www.folkartmuseum.org)



*Cleveland-Hendricks Crazy Quilt*

Maker unknown

1885-1890

Lithographed silk ribbons, silk, wool with  
cotton fringe and silk and metallic embroidery  
75" x 77"

Gift of Margaret Cavigga

Item number 1985.23.3

American Folk Art Museum

New York, New York

[www.folkartmuseum.org](http://www.folkartmuseum.org)



Couple seated in front of a quilt

In upcoming book by Janet E. Finley, Schiffer Publishing,  
Atglen, Pennsylvania; late 2012

Collection of Janet E. Finley



Appliqué panel

Martha Cannon Webb

c. 1840

Cotton

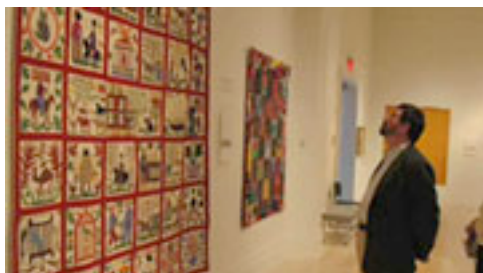
17" x 208"

Item number 1977.081

The Charleston Museum

Charleston, South Carolina

[www.charlestonmuseum.org](http://www.charlestonmuseum.org)



*Quilts in Common* exhibition

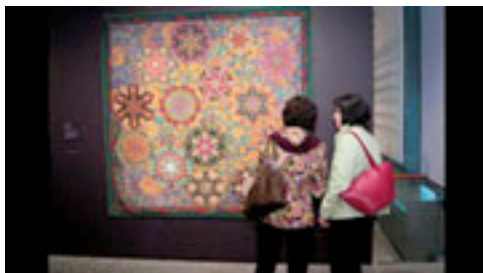
March 30 - August 16, 2008

The International Quilt Study Center & Museum

University of Nebraska-Lincoln

Lincoln, Nebraska

[www.quiltstudy.org](http://www.quiltstudy.org)



*Kaleidoscope Quilts: The Art of Paula Nadelstern* exhibition

April 21 - September 13, 2009

American Folk Art Museum

New York, New York

[www.folkartmuseum.org](http://www.folkartmuseum.org)





*Textural Rhythms: Constructing the Jazz Tradition—  
Contemporary African American Quilts* exhibition  
March 24 - October 11, 2009  
American Folk Art Museum  
Lincoln Square  
New York, New York  
[www.folkartmuseum.org](http://www.folkartmuseum.org)



*Quilts in Common* exhibition  
March 30 - August 16, 2008  
The International Quilt Study Center & Museum  
University of Nebraska-Lincoln  
Lincoln, Nebraska  
[www.quiltstudy.org](http://www.quiltstudy.org)



*Marseille: White Corded Quilting* exhibition  
November 13, 2010 - May 22, 2011  
The International Quilt Study Center & Museum  
University of Nebraska-Lincoln  
Lincoln, Nebraska  
[www.quiltstudy.org](http://www.quiltstudy.org)