



- *Every effort has been made to provide correct and accurate information.*
- *The institutions and artists have generously granted permission to use their images. They hold the copyrights to their images.*
- *For personal use only. For permission to reproduce multiple copies, please contact us at contact@whyquiltsmatter.org.*

Episode 5

Gee's Bend: "The Most Famous Quilts in America?"



Pettway family group, Gee's Bend, Alabama
 April 1937
 Photo by Arthur Rothstein
 Library of Congress
 Prints & Photographs Division
 Farm Security Administration
 Office of War Information Photograph Collection
 Washington, D.C.
 Item number LC-USF34- 025385-D
www.loc.gov/pictures



Map of Gee's Bend
 From *Gee's Bend: The Architecture of the Quilt*
 Paul Arnett, Tinwood Books, 2006
 Courtesy of Matt Arnett
 Photo by Pitkin Studio



Old man Mosely sits by his house,
Gee's Bend, Alabama
May 1939
Photo by Marion Post Wolcott
Library of Congress
Prints & Photographs Division
Farm Security Administration
Office of War Information Photograph Collection
Washington, D.C.
Item number LC-USF33-030362-M1
www.loc.gov/pictures



Cable ferry from Camden to Gee's Bend, Alabama
May 1939
Photo by Marion Post Wolcott
Library of Congress
Prints & Photographs Division
Farm Security Administration
Office of War Information Photograph Collection
Washington, D.C.
Item number LC-USF33- 030356-M4
www.loc.gov/pictures



Sandy Hill, the old Pettway plantation house,
Gee's Bend, Alabama
April 1937
Photo by Arthur Rothstein
Library of Congress
Prints & Photographs Division
Farm Security Administration
Office of War Information Photograph Collection
Washington, D.C.
Item number LC-USF34- 025380-D
www.loc.gov/pictures



Inhabitants of Gee's Bend, Alabama
April 1937
Photo by Arthur Rothstein
Library of Congress
Prints & Photographs Division
Farm Security Administration
Office of War Information Photograph Collection
Washington, D.C.
Item number LC-USF34- 025391-D
www.loc.gov/pictures



Half Squares
Martha Pettway
1930s
Cotton
86" x 75"
From *Gee's Bend: The Architecture of the Quilt*
Paul Arnett, Tinwood Books, 2006
Courtesy of Matt Arnett
Photo by Pitkin Studio



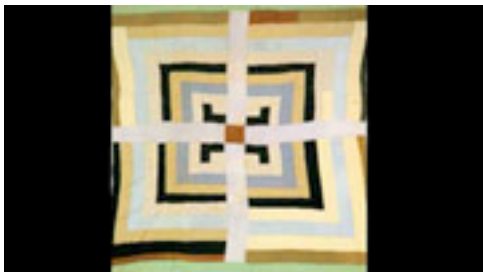
Episcopal Priest
B-roll from *The Quiltmakers of Gee's Bend*
Alabama Public Television, 2004



Quilts on the clothesline, Mary Lee Bendolph's Yard
2006
From *Gee's Bend: The Architecture of the Quilt*
Paul Arnett, Tinwood Books, 2006
Courtesy of Matt Arnett
Photo by Pitkin Studio



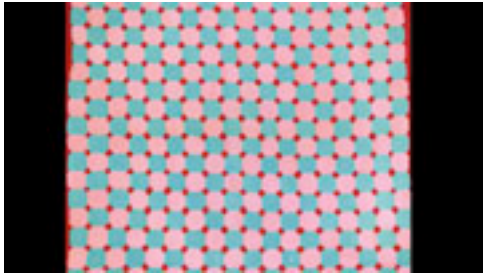
Bricklayer Variation and Housetop, two-sided quilt
Loretta Pettway
1972
Corduroy
From *Gee's Bend: The Architecture of the Quilt*
Paul Arnett, Tinwood Books, 2006
Courtesy of Matt Arnett
Photo by Pitkin Studio



Housetop with Cross
Linda Diane Bennett
c. 1970
Cotton, synthetic blends, wool
78" x 75"
From *Gee's Bend: The Architecture of the Quilt*
Paul Arnett, Tinwood Books, 2006
Courtesy of Matt Arnett
Photo by Pitkin Studio



Freedom Quilting Bee
 From *Gee's Bend: The Architecture of the Quilt*
 Paul Arnett, Tinwood Books, 2006
 Courtesy of Matt Arnett
 Photo by Pitkin Studio



Snowball variation
 Sarah Benning
 1949 or 1950
 Cotton, velveteen, synthetics
 101" x 85"
 From *Gee's Bend: The Architecture of the Quilt*
 Paul Arnett, Tinwood Books, 2006
 Courtesy of Matt Arnett
 Photo by Pitkin Studio



B-roll from *The Quilts of Gee's Bend*
 Courtesy of Matt Arnett and Vanessa Vadim
 Tinwood Media Production, 2002
 Atlanta, Georgia



Housetop
 Mary L. Bennett
 1970s, quilted in 2002
 Corduroy
 81" x 74"
 From *Gee's Bend: The Architecture of the Quilt*
 Paul Arnett, Tinwood Books, 2006
 Courtesy of Matt Arnett
 Photo by Pitkin Studio



Museum of Fine Arts Houston
 Houston, TX
www.mfah.org



Blocks and Strips

Loretta P. Bennett

2005

Polyester, polyester double knit

69" x 58"

From *Gee's Bend: The Architecture of the Quilt*

Paul Arnett, Tinwood Books, 2006

Courtesy of Matt Arnett

Photo by Pitkin Studio



Whitney Museum of American Art

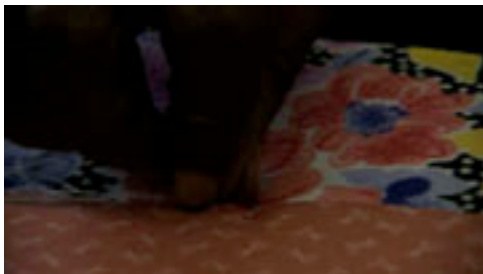
Photo by Daniel J. Feld



The Quilts of Gee's Bend exhibition

B-roll from *The Quiltmakers of Gee's Bend*

Alabama Public Television, 2004



B-roll from *The Quilts of Gee's Bend*

Courtesy of Matt Arnett and Vanessa Vadim

Tinwood Media Production, 2002

Atlanta, Georgia



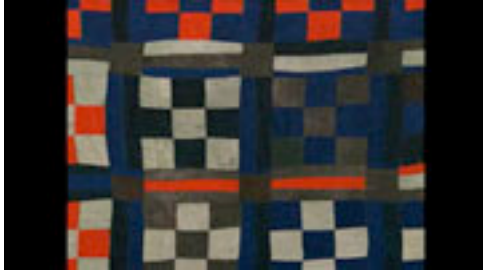
Jazzy Geometry, Cool Quilters

By Michael Kimmelman

The New York Times

Weekend Fine Arts Leisure

November 29, 2002



Nine Patch
Ruth Mosely
From *The Quilts of Gee's Bend*
Courtesy of Matt Arnett and Vanessa Vadim
Tinwood Media Production, 2002
Atlanta, Georgia



B-roll from *The Quilts of Gee's Bend*
Courtesy of Matt Arnett and Vanessa Vadim
Tinwood Media Production, 2002
Atlanta, Georgia



Blocks and Strips work-clothes quilt
Missouri Pettway
1942
Cotton, corduroy, sacking material
90" x 69"
From *The Quilts of Gee's Bend*
Tinwood Books, 2002
Courtesy of Matt Arnett



Chinese Coins variation
Arlonzia Pettway
c. 1965, quilted in 1976
Corduroy, denim, cotton twill
88" x 73"
From *The Quilts of Gee's Bend*
Tinwood Books, 2002
Courtesy of Matt Arnett



Woman making Gullah basket
Folklife Resource Center, McKissick Museum
The University of South Carolina
Columbia, South Carolina
www.cas.sc.edu/mcks



Clyde Davenport
Photo by David Bartlett
Kentuckiana Digital Library
Morehead State University Special
Collections and Archives
Morehead, Kentucky
<http://kdl.kyvl.org>



Musicians playing in field
From Mississippi Blues history presentation
Courtesy of William Ferris



Medallion
Loretta P. Bennett
2005
Cotton, twill
88" x 63"
From *Gee's Bend: The Architecture of the Quilt*
Paul Arnett, Tinwood Books, 2006
Courtesy of Matt Arnett
Photo by Pitkin Studio



Work-clothes Strips
Annie Mae Young
c. 1970
Denim, corduroy, cotton/polyester blend
108" x 76"
From *Gee's Bend: The Architecture of the Quilt*
Paul Arnett, Tinwood Books, 2006
Courtesy of Matt Arnett
Photo by Pitkin Studio



Basket Weave (Freedom Quilting Bee name "Crazy")
Nettie Young
1975
Cotton, velveteen, double knit
89" x 80"
From *Gee's Bend: The Architecture of the Quilt*
Paul Arnett, Tinwood Books, 2006
Courtesy of Matt Arnett
Photo by Pitkin Studio



Housetop sampler containing *Nine Patch*
and *Southern Star*
Arlonzia Pettway
1976
Cotton, polyester and wool blend, corduroy
90" x 72"
From *Gee's Bend: The Women and Their Quilts*
Tinwood Books, 2002
Courtesy of Matt Arnett



Housetop
Lucy T. Pettway
c. 1970
Cotton, cotton blend
76" x 80"
From *Gee's Bend: The Architecture of the Quilt*
Paul Arnett, Tinwood Books, 2006
Courtesy of Matt Arnett
Photo by Pitkin Studio



Ramsey's Groceries (now destroyed), where
County Road 29 enters Gee's Bend
From *Gee's Bend: The Architecture of the Quilt*
Paul Arnett, Tinwood Books, 2006
Courtesy of Matt Arnett
Photo by William Arnett



Tinnie Dell Pettway's store, Gee's Bend
From *Gee's Bend: The Architecture of the Quilt*
Paul Arnett, Tinwood Books, 2006
Courtesy of Matt Arnett
Photo by Pitkin Studio



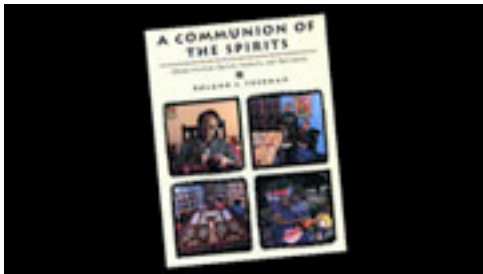
Door, Dew Drop Inn nightclub, Gee's Bend
From *Gee's Bend: The Architecture of the Quilt*
Paul Arnett, Tinwood Books, 2006
Courtesy of Matt Arnett
Photo by Pitkin Studio



Flora Moore's house, Rehoboth
From *Gee's Bend: The Architecture of the Quilt*
Paul Arnett, Tinwood Books, 2006
Courtesy of Matt Arnett
Photo by Pitkin Studio



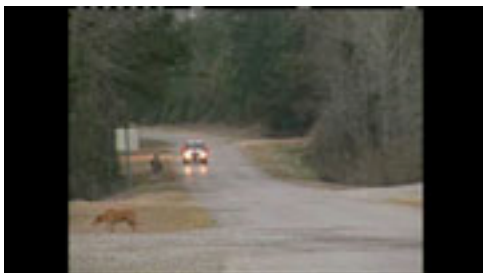
Dew Drop Inn nightclub, Gee's Bend
From *Gee's Bend: The Architecture of the Quilt*
Paul Arnett, Tinwood Books, 2006
Courtesy of Matt Arnett
Photo by Pitkin Studio



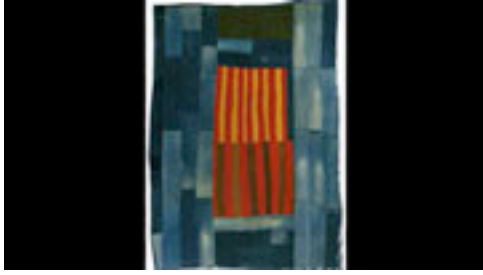
*A Communion of the Spirits:
African-American Quilters, Preservers,
and Their Stories*
Roland L. Freeman, 1996



Annie Mae Young with quilts and her
great-granddaughter, Shaquetta; Rehoboth
1993
From *A Communion of the Spirits:
African-American Quilters, Preservers,
and Their Stories*
Roland L. Freeman, 1996



B-roll from *The Quilts of Gee's Bend*
Courtesy of Matt Arnett and Vanessa Vadim
Tinwood Media Production, 2002
Atlanta, Georgia



Workclothes quilt with center medallion of stripes
 Annie Mae Young
 1976
 Denim, corduroy, synthetic blend
 108" x 77"
 From *Gee's Bend: The Architecture of the Quilt*
 Paul Arnett, Tinwood Books, 2006
 Courtesy of Matt Arnett
 Photo by Pitkin Studio

Workclothes quilt again



B-roll from *The Quilts of Gee's Bend*
 Courtesy of Matt Arnett and Vanessa Vadim
 Tinwood Media Production, 2002
 Atlanta, Georgia



Housetop
 Lola Pettway
 1970s
 Corduroy
 89" x 74"
 From *Gee's Bend: The Architecture of the Quilt*
 Paul Arnett, Tinwood Books, 2006
 Courtesy of Matt Arnett
 Photo by Pitkin Studio



Medallion
 Loretta P. Bennett
 2005
 Cotton, twill
 88" x 63"
 From *Gee's Bend: The Architecture of the Quilt*
 Paul Arnett, Tinwood Books, 2006
 Courtesy of Matt Arnett
 Photo by Pitkin Studio



Medallion

Pearlie Pettway Hall

1950s

Cotton

80" x 65"

From *Gee's Bend: The Architecture of the Quilt*

Paul Arnett, Tinwood Books, 2006

Courtesy of Matt Arnett

Photo by Pitkin Studio



Medallion variation, tied with yarn

Creola Pettway

1983

Nylon blend (tricot)

84" x 69"

From *Gee's Bend: The Women and Their Quilts*

Tinwood Books, 2002

Courtesy of Matt Arnett



B-roll from *The Quilts of Gee's Bend*

Courtesy of Matt Arnett and Vanessa Vadim

Tinwood Media Production, 2002

Atlanta, Georgia



B-roll from *The Quilts of Gee's Bend*

Courtesy of Matt Arnett and Vanessa Vadim

Tinwood Media Production, 2002

Atlanta, Georgia



Blocks and Strips, two-sided quilt

Lucy T. Pettway

1960s

Denim, corduroy, cotton

81" x 73"

From *Gee's Bend: The Architecture of the Quilt*

Paul Arnett, Tinwood Books, 2006

Courtesy of Matt Arnett

Photo by Pitkin Studio



Housetop Variation

Martha Pettway

1930s

Cotton

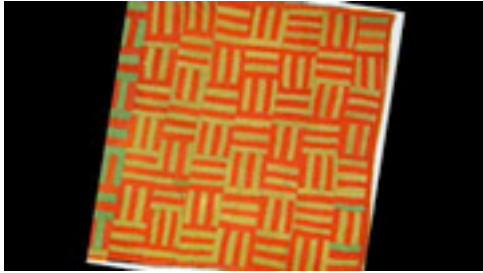
80" x 73"

From *Gee's Bend: The Architecture of the Quilt*

Paul Arnett, Tinwood Books, 2006

Courtesy of Matt Arnett

Photo by Pitkin Studio



Basket Weave

Nettie Jane Kennedy

1973

Corduroy

80" x 80"

From *Gee's Bend: The Architecture of the Quilt*

Paul Arnett, Tinwood Books, 2006

Courtesy of Matt Arnett

Photo by Pitkin Studio



The Quilts of Gee's Bend exhibition

B-roll from *The Quiltmakers of Gee's Bend*

Alabama Public Television, 2004



"H" Variation (quiltmaker's name: "Milky Way")

Nettie Young

1971

Cotton

88" x 77"

The Quilts of Gee's Bend exhibition

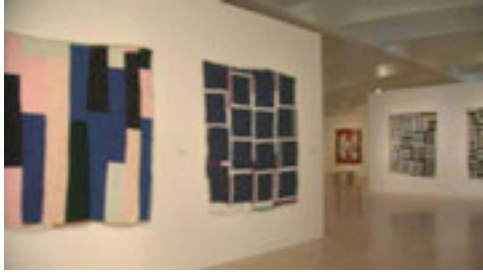
2002

Whitney Museum of American Art

New York, New York

From *The Quiltmakers of Gee's Bend*

Alabama Public Television, 2004



The Quilts of Gee's Bend exhibition
Whitney Museum of American Art
2002
New York, New York
From *The Quiltmakers of Gee's Bend*
Alabama Public Television, 2004



Medallion
Louisiana P. Bendolph
2006
Cotton
80" x 72"
From *Gee's Bend: The Architecture of the Quilt*
Paul Arnett, Tinwood Books, 2006
Courtesy of Matt Arnett
Photo by Pitkin Studio



Two-sided *Geometric*
Loretta P. Bennett
2003
Corduroy, velveteen
66" x 59"
From *Gee's Bend: The Architecture of the Quilt*
Paul Arnett, Tinwood Books, 2006
Courtesy of Matt Arnett
Photo by Pitkin Studio



The Quilts of Gee's Bend exhibition
Milwaukee Art Museum
B-roll from *The Quiltmakers of Gee's Bend*
Alabama Public Television, 2004



The Quilts of Gee's Bend exhibition
B-roll from *The Quiltmakers of Gee's Bend*
Alabama Public Television, 2004



Bars
 Annie Mae Young
 c. 1965
 Cotton, polyester, synthetic blends
 81" x 79"
 From *Gee's Bend: The Architecture of the Quilt*
 Paul Arnett, Tinwood Books, 2006
 Courtesy of Matt Arnett
 Photo by Pitkin Studio



Blocks, Strips, Strings and Half Squares
 Mary Lee Bendolph
 2005
 Cotton
 84" x 81"
 From *Gee's Bend: The Architecture of the Quilt*
 Paul Arnett, Tinwood Books, 2006
 Courtesy of Matt Arnett
 Photo by Pitkin Studio



Gee's Bend books
 Photo by Focal Point



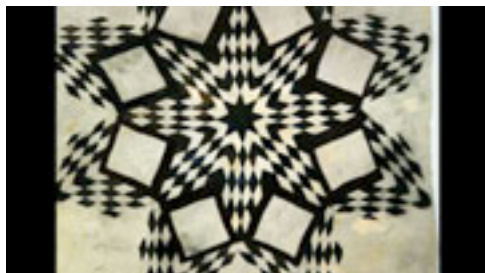
Medallion with Center Bars
 Polly Bennett
 1943
 Cotton
 80" x 72"
 From *Gee's Bend: The Architecture of the Quilt*
 Paul Arnett, Tinwood Books, 2006
 Courtesy of Matt Arnett
 Photo by Pitkin Studio



Basket Weave (Freedom Quilting Bee name "Crazy")
 Nettie Young
 1975
 Cotton, velveteen, double knit
 89" x 80"
 From *Gee's Bend: The Architecture of the Quilt*
 Paul Arnett, Tinwood Books, 2006
 Courtesy of Matt Arnett
 Photo by Pitkin Studio



Housetop – nine block variation
 Mary L. Bennett
 c. 1975
 Cotton, denim, cotton/polyester blend, cotton knit
 87" x 77"
 From *The Quilts of Gee's Bend*
 Tinwood Books, 2002
 Courtesy of Matt Arnett



Broken Star variation
 Magdalene Wilson
 c. 1925
 Cotton, wool, silk
 91" x 85"
 From *Gee's Bend: The Architecture of the Quilt*
 Paul Arnett, Tinwood Books, 2006
 Courtesy of Matt Arnett
 Photo by Pitkin Studio



Bricklayer single-block variation
 Aolar Mosely
 c. 1950
 Cotton, twill, cotton hopsacking, corduroy
 81" x 85"
 From *Gee's Bend: The Architecture of the Quilt*
 Paul Arnett, Tinwood Books, 2006
 Courtesy of Matt Arnett
 Photo by Pitkin Studio



Bricklayer variation
Loretta Pettway
c. 1975
Corduroy
94" x 69"
From *Gee's Bend: The Architecture of the Quilt*
Paul Arnett, Tinwood Books, 2006
Courtesy of Matt Arnett
Photo by Pitkin Studio



Made in Gee's Bend
By Lisa Gray
Houston Chronicle
Zest cover story
June 11, 2006



Housetop and *Bricklayer* blocks with bars
Lucy T. Pettway
c. 1955
Cotton, corduroy, cotton knit, flannel, even weave
90" x 78"
From *Gee's Bend: The Architecture of the Quilt*
Paul Arnett, Tinwood Books, 2006
Courtesy of Matt Arnett
Photo by Pitkin Studio



Housetop, fractured-medallion variation
Delia Bennett
c. 1955
Cotton
79" x 79"
From *Gee's Bend: The Architecture of the Quilt*
Paul Arnett, Tinwood Books, 2006
Courtesy of Matt Arnett
Photo by Pitkin Studio



Negroes, descendants of former slaves of the Pettway Plantation
1937
Photo by Arthur Rothstein
Library of Congress
Prints & Photographs Division
Farm Security Administration
Office of War Information Photograph Collection
Washington, D.C.
Item number LC-USF34- 025232-D
www.loc.gov/pictures



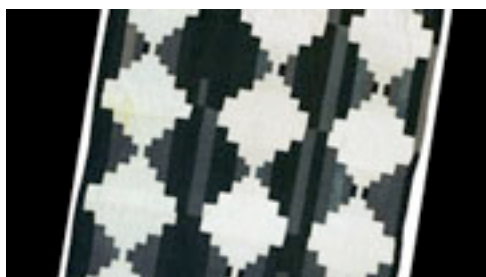
Courtesy of Shelly Zegart
Photo by Focal Point



Courtesy of Shelly Zegart
Photo by Focal Point



Bricklayer – sampler variation
Loretta Pettway
1958
Cotton and corduroy
82" x 78"
From *Gee's Bend: The Architecture of the Quilt*
Paul Arnett, Tinwood Books, 2006
Courtesy of Matt Arnett
Photo by Pitkin Studio



Bricklayer variation
Linda Diane Bennett
c. 1970
Denim
80" x 62"
From *Gee's Bend: The Architecture of the Quilt*
Paul Arnett, Tinwood Books, 2006
Courtesy of Matt Arnett
Photo by Pitkin Studio



Gee's Bend Ferry sign
Courtesy Joe Cunningham and Julie Silber



Woman on porch
Courtesy of Joe Cunningham and Julie Silber



Gee's Bend Quilters sign
Courtesy of Joe Cunningham and Julie Silber



The Quilts of Gee's Bend exhibition
B-roll from *The Quiltmakers of Gee's Bend*
Alabama Public Television, 2004



B-roll from *The Quilts of Gee's Bend*
 Courtesy of Matt Arnett and Vanessa Vadim
 Tinwood Media Production, 2002
 Atlanta, Georgia



Bringing home feed and fertilizer from store,
 Gee's Bend, Alabama
 May 1939
 Photo by Marion Post Wolcott
 Library of Congress
 Prints & Photographs Division
 Office of War Information Collection
 Washington, D.C.
 Farm Security Administration
 Item number LC-USF34-051516-D
www.loc.gov/pictures



Quilts on clothesline at Polly Bennett's house,
 Alabama Route 5, Near Alberta
 2001
 From *Gee's Bend: The Women and Their Quilts*
 Tinwood Books, 2002
 Courtesy of Matt Arnett
 Photo by Matthew Arnett



African American quilts, vicinity of the Alabama River
 (possibly Gee's Bend), Wilcox County, Alabama
 c. 1900
 From *Gee's Bend: The Architecture of the Quilt*
 Paul Arnett, Tinwood Books, 2006
 Courtesy of Matt Arnett
 Photo by Edith Morgan



B-roll from *The Quilts of Gee's Bend*
 Courtesy of Matt Arnett and Vanessa Vadim
 Tinwood Media Production, 2002
 Atlanta, Georgia



So Profound It's Subversive
By Catherine Fox
The Atlanta Journal-Constitution
Arts
February 17, 2002



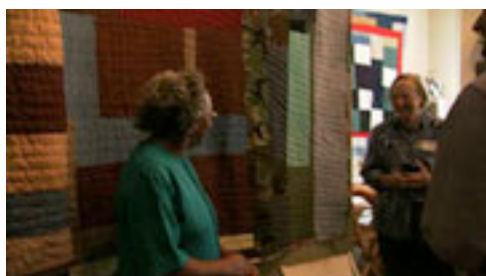
Quilt show has the art world buzzing
By Maria Puente
USA Today
Arts & Culture
February 21, 2003



Bill Arnett with women quilting
Courtesy of Matt Arnett



Bill Arnett with Gee's Bend quilters
Courtesy of Matt Arnett



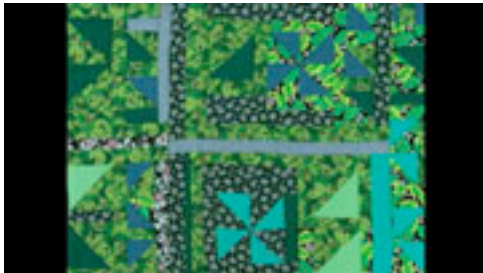
The Quilts of Gee's Bend exhibition
B-roll from *The Quiltmakers of Gee's Bend*
Alabama Public Television, 2004



Sewing a quilt; Gee's Bend, Alabama
 April 1937
 Photo by Arthur Rothstein
 Library of Congress
 Prints & Photographs Division
 Farm Security Administration
 Office of War Information Photograph Collection
 Washington, D.C.
 Item number LC-USF34-T01-025363-D
www.loc.gov/pictures



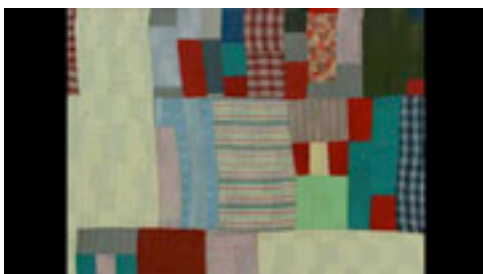
B-roll from *The Quilts of Gee's Bend*
 Courtesy of Matt Arnett and Vanessa Vadim
 Tinwood Media Production, 2002
 Atlanta, Georgia



Pinwheel variation
 Essie Bendolph Pettway
 2000
 Cotton, cotton and polyester blends
 88" x 85"
 From *The Quilts of Gee's Bend*
 Tinwood Books, 2002
 Courtesy of Matt Arnett



Multiple columns of rectangles, blocks and bars
 Essie Bendolph Pettway
 1980
 Corduroy
 93" x 75"
 From *The Quilts of Gee's Bend*
 Tinwood Books, 2002
 Courtesy of Matt Arnett



Blocks and One Patch, two-sided quilt
 Essie Bendolph Pettway
 1973
 Cotton, polyester knit, denim
 88" x 80"
 From *The Quilts of Gee's Bend*
 Tinwood Books, 2002
 Courtesy of Matt Arnett