



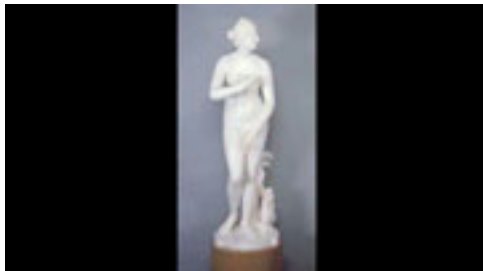
- *Every effort has been made to provide correct and accurate information.*
- *The institutions and artists have generously granted permission to use their images. They hold the copyrights to their images.*
- *For personal use only. For permission to reproduce multiple copies, please contact us at contact@whyquiltsmatter.org.*

Episode 4

What is Art?



Floral Still Life
 Jacob van Walscapelle
 1682
 Oil on canvas
 40 1/4" x 35 3/16"
 Gift of Eleanor Bingham Miller and Barry Bingham, Sr.
 in honor of Mary Caperton Bingham
 Item number 1987.1
 The Speed Art Museum
 Louisville, Kentucky
www.speedmuseum.org



Venus de' Medici
 Joel Tanner Hart
 1873
 Marble
 61 7/8" x 18 3/8" x 20 1/4"
 Gift of the Louisville Free Public Library Conservation
 funded by The Alliance of The Speed Art Museum
 Item number 1996.9.1
 The Speed Art Museum
 Louisville, Kentucky
www.speedmuseum.org



July at Noon in Umbria
 Billy Hertz
 2004
 Oil on paper on panel
 29" x 20"
www.billyhertzgallery.com



Dish
 Workshop of the Fontana family
 After designs by Battista Franco
 c. 1560
 Maiolica
 2 ³/₈" x 17 ⁷/₁₆"
 Bequest from the Preston Pope Satterwhite Collection;
 conservation funded by Mr. & Mrs. William O. Alden,
 Jr., 2002
 Item number 1949.30.244
 The Speed Art Museum
 Louisville, Kentucky
www.speedmuseum.org



Blighted
 Kay Polson Grubola
 2010
 Hawthorn leaves, silk chiffon, thread
 22 ³/₄" x 15 ³/₄"
www.grubola.com



Subduction Calderon
 Walter Hyleck
 2007
 Ceramic, black earthenware, deflocculated slip, ash
 glaze, slate, oak
 14" x 14" x 12"
 Courtesy of the Kentucky Museum of Art & Craft
 Louisville, Kentucky
www.kentuckyarts.org



Incalmo Vessel
 Brook Forrest White, Jr.
 2008
 Blown glass
 11" x 9" x 9"
 Photo by Geoffrey Carr
www.flamerun.com



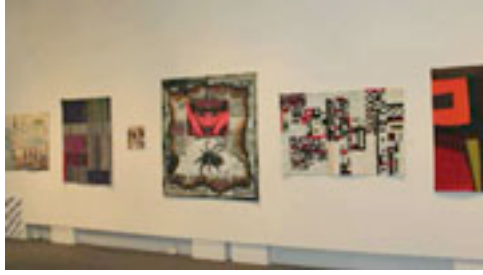
What Trees Have Done for Me
 Andrew D. Brown
 Hickory Burl
 9" x 11"
 Photo by Geoffrey Carr
 Courtesy of the Kentucky Museum of Art & Craft
 Louisville, Kentucky
www.kentuckyarts.org



Typical farmhouse, spring housecleaning, homemade quilts and bedding in sun
 April 1939
 Photo by Marion Post Wolcott
 Library of Congress
 Prints & Photographs Division
 Farm Security Administration
 Office of War Information Photograph Collection
 Washington, D.C.
 Item number LC-USF34-051424-D
www.loc.gov/pictures



Farm women of the "Helping Hand" club
 October 1939
 Photo by Dorothea Lange
 Library of Congress
 Prints & Photographs Division
 Farm Security Administration
 Office of War Information Photograph Collection
 Washington, D.C.
 Item number LC-USF34-021099-C
www.loc.gov/pictures



Form Not Function: Quilt Art exhibition
January 8 - March 6, 2010
Photo by Karen Gillenwater
Carnegie Center for Art & History
New Albany, Indiana
www.carnegiecenter.org



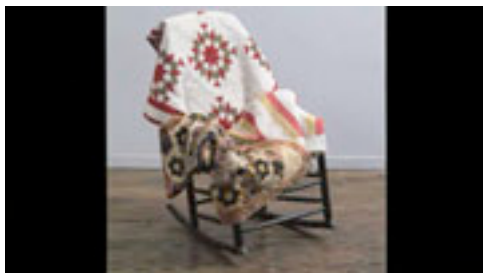
Form Not Function: Quilt Art exhibition
January 8 - March 6, 2010
Photo by Karen Gillenwater
Carnegie Center for Art & History
New Albany, Indiana
www.carnegiecenter.org



Sewing a quilt, Gee's Bend, Alabama
April 1937
Photo by Arthur Rothstein
Library of Congress
Prints & Photographs Division
Farm Security Administration
Office of War Information Photograph Collection
Washington, D.C.
Item number LC-USF34-025363-D
www.loc.gov/pictures



Farm women of the "Helping Hand" club
October 1939
Photo by Dorothea Lange
Library of Congress
Prints & Photographs Division
Farm Security Administration
Office of War Information Photograph Collection
Washington, D.C.
Item number LC-USF34-021110-C
www.loc.gov/pictures



Caesar's Crown
Bars Variation
Mosaic or Honeycomb
Late 19th-century crib quilts
Silk and cotton
Courtesy of Victoria Hoffman
Photo by D. James Dee



A quilting party in an Alvin, Wisconsin, home
May 1937
Photo by Russell Lee
Library of Congress
Prints & Photographs Division
Farm Security Administration
Office of War Information Photograph Collection
Washington, D.C.
Item number LC-USF34-010885-D
www.loc.gov/pictures



Housewives in Tygart Valley, West Virginia, have
weekly group meetings in home economics
September 1938
Photo by Marion Post Wolcott
Library of Congress
Prints & Photographs Division
Farm Security Administration
Office of War Information Photograph Collection
Washington, D.C.
Item number LC-USF34-050077-E-D
www.loc.gov/pictures



OAHU
Joan Schulze
1981
72" x 72"
<http://joan-of-arts.com>



Markings #4: Trying to Control Anxiety
Nancy Crow
2007
Cotton
42" x 30 1/2"
Photo by J. Kevin Fitsimons
Nancy Crow: Recent and New Work exhibition
May 29 - August 15, 2010
Schweinfurth Memorial Art Center
Auburn, New York
www.schweinfurthartcenter.org
www.nancycrow.com



A House Is Not a Home

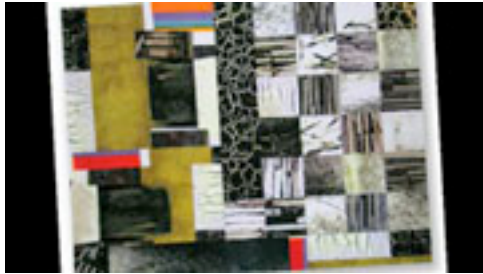
Anne Kingsbury

1983

Clay, leather, beads backed with silk

48" x 36"

www.woodlandpattern.org



Grid with Colorful Past

Michael James

2008

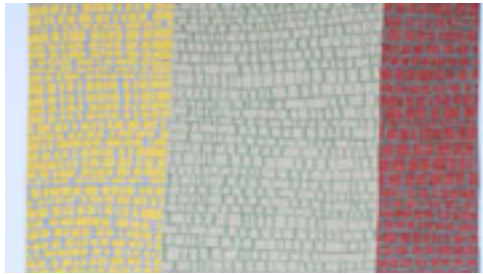
Cotton, dyes

35 ½" x 46"

Courtesy of Modern Arts Midwest

Photo by Larry Gawel

www.unl.edu/mjames_quilts



Crazed I: Tricolor

Kathleen Loomis

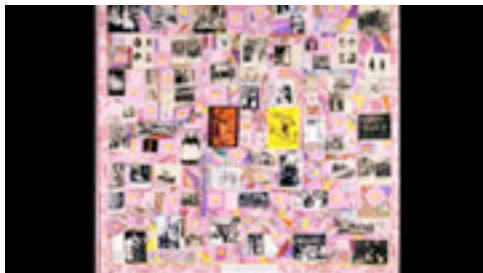
2007

Commercial cottons

41" x 29"

Photo by George Plager

www.kathyloomis.com



Resistance to Tyranny is Obedience to God

Adrienne Yorinks

1995

71" x 79"

www.adrienneyorinks.com/textile



C. J. Pressma studio

B-roll by Alan Miller

www.cjpressma.com



Desert Wrap
Brigitte Rutenberg
2010
Ink on mylar
30" x 24"
www.rutenbergart.com



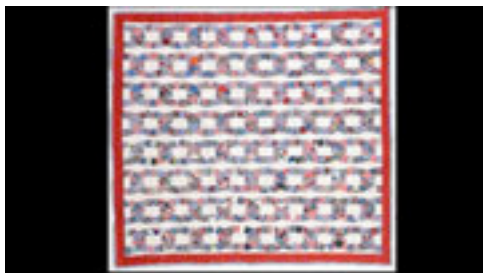
Our Dead: June 21, 2006
Adrienne Yorinks
2006
Photo-transfers, cotton, silk
66" x 99"
www.adrienneyorinks.com/textile



For the Love of Flowers exhibition
March 4 - April 23, 2005
Kentucky Museum of Art & Craft
Louisville, Kentucky
www.kentuckyarts.org



Appliquéd Green and Yellow Flowers
Maker unknown
1930s
74" x 72"
Photo by D. James Dee
Courtesy of Victoria Hoffman



Links of Friendship
Maker unknown
c. 1940
76" x 80"
Photo by D. James Dee
Courtesy of Victoria Hoffman



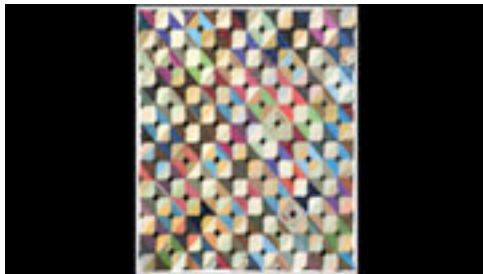
Walker Evans
 February 1937
 Photo by Edwin Locke
 Library of Congress
 Prints & Photographs Division
 Farm Security Administration
 Office of War Information Photograph Collection
 Washington, D.C.
 Item number LC-DIG-fsa-8a14702
www.loc.gov/pictures



Celebrity Quilt
 Vadis Turner
 2007
 Antique cotton, embroidery thread
 60" x 48"
www.vadisturner.com



Album Quilt
 Maker unknown
 c. 1845-1855
 Cotton
 108" x 98"
 Collection of Jane and Gerald Katcher



Courthouse Steps, White House Steps Variation
 Carrie E. White Reed
 c. 1900
 55 3/4" x 57"
 Photo by Joe Ofria
 Item number 1986.02T-5378
 New England Quilt Museum
 Lowell, Massachusetts
www.nequiltmuseum.org
 More info at www.quiltindex.org



Wool Drawings Quilt
 Maker unknown
 c. 1900
 Wool
 81" x 78"
 Photo by Geoffrey Carr
 Formerly in the collection of Shelly Zegart

Collection of The Art Institute of Chicago
Chicago, Illinois
www.artic.edu/aic/collections/artwork/category/40



Imagine Hope exhibition
April 9 - May 25, 2010
Hollis Chatelain
The National Quilt Museum
Paducah, Kentucky
B-roll by Alan Miller
www.quiltmuseum.org



Page from a scrapbook
c. 1910
Photo by Samuel H. Gottscho
Library of Congress
Prints & Photographs Division
Gottscho-Schleisner Collection
Washington, D.C.
Item number LC-USZC2-4711
www.loc.gov/pictures



Two photographers taking each others' pictures
Between 1909 and 1932
Library of Congress
Prints & Photographs Division
National Photo Company Collection
Washington, D.C.
Item number LC-DIG-ppmsca-13703
www.loc.gov/pictures



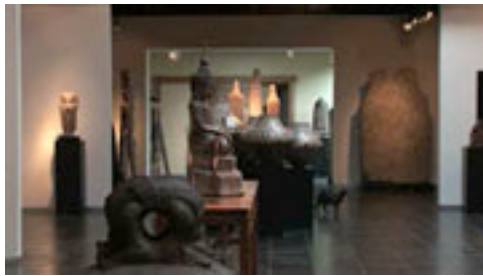
Photographs: Second Annual Exhibition
Sioux City Camera Club
Between 1936 and 1939
Library of Congress
Prints & Photographs Division
Washington, D.C.
Item number LC-USZC2-1134
www.loc.gov/pictures



Tree Limb and Barn
Geoffrey Carr
Black & white infrared photograph
30" x 40"
<http://carr-photo.com>



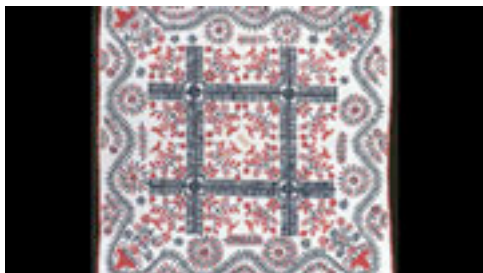
The Starry Night
Vincent Van Gogh
Public domain



Douglas Dawson Gallery
B-roll by Alan Miller



Every Day Use by Alice Walker
Book cover
Public domain



Original design
Maker unknown
1897
Cotton
68" x 69"
Photo by Geoffrey Carr
Formerly in the collection of Shelly Zegart



Renaissance Revival
 Mariya Waters
 2007
 86 ½" x 86 ½"
 Item number 2009.01.01
 The National Quilt Museum
 Paducah, Kentucky
www.quiltmuseum.org
 More info at www.quiltindex.org



The Scarlet Letter
 Kathleen Loomis
 2002
 Commercial cottons
 52" x 53"
 Photo by George Plager
www.kathyloomis.com



Mary Lee Bendolph and Loretta Pettway quilting
 Bendolph's quilt top in her home
 2005
 From *Gee's Bend: The Architecture of the Quilt*
 Paul Arnett, Tinwood Books, 2006
 Courtesy of Matt Arnett
 Photo by Matt Arnett



Center Medallion
 America Irby
 c. 1940
 Corduroy
 83" x 76"
 From *Gee's Bend: The Architecture of the Quilt*
 Paul Arnett, Tinwood Books, 2006
 Courtesy of Matt Arnett
 Photo by Pitkin Studio



Blocks and Strips
 Annie Mae Young
 c. 1970
 Cotton, polyester, synthetic blends
 83" x 80"
 From *Gee's Bend: The Architecture of the Quilt*
 Paul Arnett, Tinwood Books, 2006
 Courtesy of Matt Arnett
 Photo by Pitkin Studio



Bricklayer Variation and Housetop

Two-sided quilt

Loretta Pettway

1972

Corduroy

86" x 83"

From *Gee's Bend: The Architecture of the Quilt*

Paul Arnett, Tinwood Books, 2006

Courtesy of Matt Arnett

Photo by Pitkin Studio



The Quilts of Gee's Bend

2005

Jule Collins Smith Museum of Fine Arts

Auburn University

Auburn, Alabama

<http://jcsmauburn.edu>



Center Medallion with Cornerstones

Martha Jane Pettway

1920s

Wool, corduroy, cotton

76" x 66"

From *Gee's Bend: The Architecture of the Quilt*

Paul Arnett, Tinwood Books, 2006

Courtesy of Matt Arnett

Photo by Pitkin Studio



Blocks and Strips and Bricklayer

Two-sided quilt

Lucy T. Pettway

1960

Denim, corduroy, cotton

81" x 73"

From *Gee's Bend: The Architecture of the Quilt*

Paul Arnett, Tinwood Books, 2006

Courtesy of Matt Arnett

Photo by Pitkin Studio



Half Squares

Martha Pettway

1930s

Cotton

86" x 75"

From *Gee's Bend: The Architecture of the Quilt*

Paul Arnett, Tinwood Books, 2006

Courtesy of Matt Arnett

Photo by Pitkin Studio



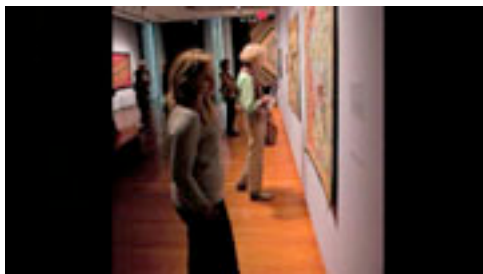
A Plain Aesthetic: Lancaster Amish Quilts

February 4, 1992 - May 3, 1992

The Speed Art Museum

Louisville, Kentucky

www.speedmuseum.org



Kaleidoscope Quilts: The Art of Paula Nadelstern

April 21 - September 13, 2009

American Folk Art Museum

New York, New York

www.folkartmuseum.org



Greek vase

Photo by Marie-Lan Nguyen

Public domain



Gold earrings

Photo by Marie-Lan Nguyen

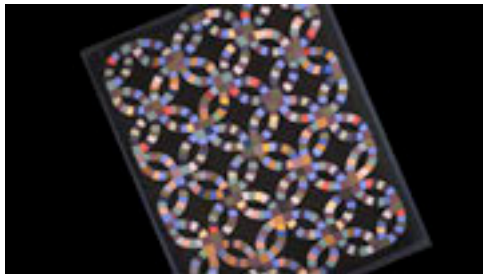
Public domain



Quilting bee
Magic City Arts Festival
Birmingham, Alabama
Courtesy of Matt Arnett, Tinwood Media



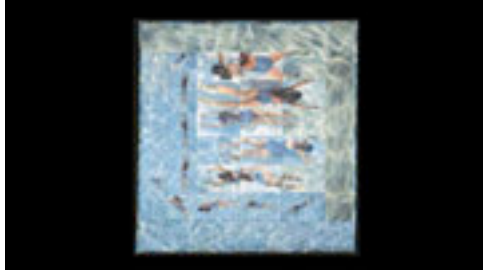
Historic photograph of women quilting
In upcoming book by Schiffer Publishing, late 2012
Collection of Janet E. Finley



Double Wedding Ring
Mrs. Andy G. Byler
1930-1940
Cotton, wool, linen and rayon
84" x 66 1/2"
Gift of Cyril Irwin Nelson in memory of his
grandparents, Guerdon Stearns and Elinor Irwin
(Chase) Holden, and in honor of his parents, Cyril
Arthur and Elise Macy Nelson
Photo by Scott Bowron
Item number 1982.22.3
American Folk Art Museum
New York, New York
www.folkartmuseum.org



Patchwork City article
By Patty Lee
New York Daily News
November 14, 2010



Vermont Swimmer
Catherine McConnell
1991
Heat transfers on acetate, cotton backing, machine-
quilted
82 ½" x 77 ½"
Collection of John M. Walsh, III



Acid Rain
Wendy Huhn
1994
Machine-pierced and quilted, paint, couching, colored
transfers, machine appliqué, glow-in-the-dark paint,
stencils, beads, photo-copied fabric
56" x 60"
Collection of John M. Walsh, III
www.wendyhuhn.com



Surf Swimmers
Tim Harding
1998
Silk, cotton duck backing
89" x 138" diptych
Collection of John M. Walsh, III exhibition
2009
Kentucky Museum of Art & Craft
Louisville, Kentucky
B-roll by Alan Miller



Cod
Ruth B. MacDowell
2002
Cotton, mother-of-pearl and plastic buttons
63" x 111"
Collection of John M. Walsh, III exhibition
2009
Kentucky Museum of Art & Craft
Louisville, Kentucky
B-roll by Alan Miller



Heart of Country Antique Show
Nashville, Tennessee
B-roll by Alan Miller



Heart of Country Antique Show
Nashville, Tennessee
B-roll by Alan Miller



Poem of the Sea
Marilyn Henrion
Foyer design by Diamond Baratta Design



Masterworks from the American Folk Art Museum
exhibition
2011
American Folk Art Museum
New York, New York
www.folkartmuseum.org



White on White (and a little gray) exhibition
March 28 - September 17, 2006
American Folk Art Museum
New York, New York
www.folkartmuseum.org



Women Only: Folk Art by Female Hands exhibition
 April 6 - September 19, 2010
 American Folk Art Museum
 New York, New York
www.folkartmuseum.org



Ashland "Quilt Day" 1st in statewide series
 Newspaper article
 Shelly Zegart Archives



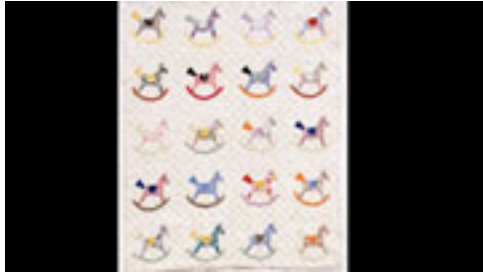
Quilters exhibit handiwork
 Newspaper article
 June 28, 1981
 Shelly Zegart Archives



Those who find art in quilts want to share it
The Courier-Journal
 Shelly Zegart Archives



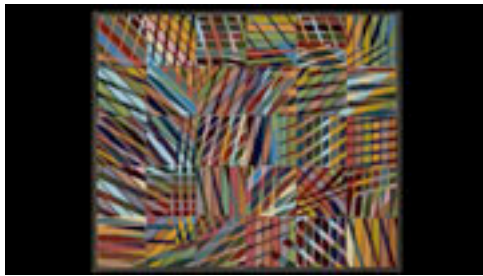
Demonstration of the pulley system
 The Kentucky Quilt Project, Inc. Archives
 University of Louisville Archives and Records Center
 Louisville, Kentucky
louisville.edu/library/archives



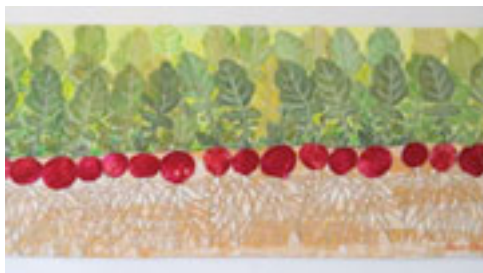
Rocking Horse appliquéd crib quilt
 Maker unknown
 1930s
 Cotton
 34" x 44"
 Courtesy of Victoria Hoffman
 Photo by D. James Dee



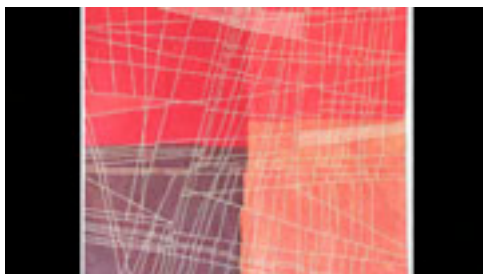
Hearts Appliqué
 Maker unknown
 Courtesy of Victoria Hoffman
 Photo by D. James Dee



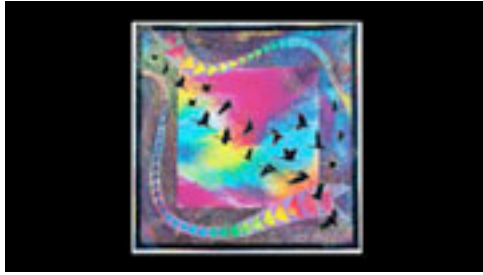
Off the Edge
 Anne McKenzie Nickolson
 1999
 Cotton, pieced and appliquéd
 57 ½" x 68 ¼"
 Ann M. Stack Fund for Contemporary Art
 Item number 2003.169
 Indianapolis Museum of Art
 Indianapolis, Indiana
www.imamuseum.org



Radish Row
 Valerie White
 2009
 Hand-dyed fabric, textile paint
 16" x 37"
www.valeriecwhite.com



Fault Lines 3
 Kathleen Loomis
 2010
 Commercial cottons
 75" x 78"
 Photo by George Plager
www.kathylloomis.com



Migrations 2

Caryl Bryer Fallert

1995

Hand-dyed

88" x 88"

Item number 1996.01.18

National Quilt Museum

Paducah, Kentucky

www.bryerpatch.com

www.quiltmuseum.org

More info at www.quiltindex.org



Summer Echo

Joy Saville

1994

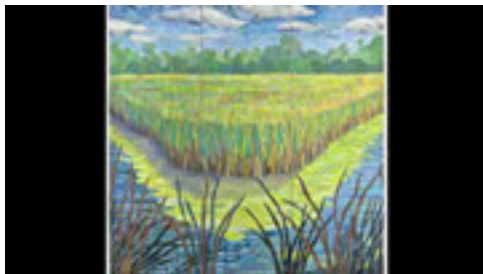
Cotton, linen, silk

51" x 54"

Collection of John M. Walsh, III

Photo by Joseph Coscia

www.joysaville.com/joysaville.com



Wisconsin Wetlands II River Bend

Sue Benner

2007

Silk, cotton, found fabrics, dye and paint, fused,
mono-print, machine-quilted

83 ½" x 83 ½"

Collection of John M. Walsh, III

Photo by Gregory Case

www.suebenner.com

Wisconsin Wetlands II River Bend again



Star of Bethlehem

Maker unknown

1880-1900

Silk, cotton

99" x 94 ¼"

Item number 1990.15.1

American Folk Art Museum

New York, New York

www.folkartmuseum.org/quilts