



- *Every effort has been made to provide correct and accurate information.*
- *The institutions and artists have generously granted permission to use their images. They hold the copyrights to their images.*
- *For personal use only. For permission to reproduce multiple copies, please contact us at [contact@whyquiltsmatter.org](mailto:contact@whyquiltsmatter.org).*

## **Episode 1**

### ***Quilts 101: Antique and Contemporary***



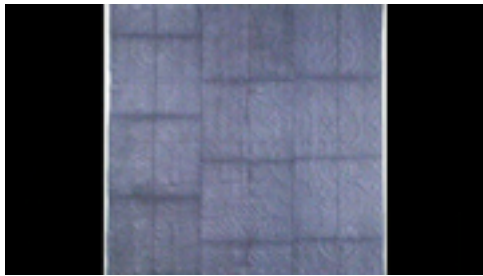
Historic photograph  
In upcoming book by Janet E. Finley, Schiffer Publishing,  
Atglen, Pennsylvania; late 2012  
Collection of Janet E. Finley



Map of the world from 1500  
Courtesy of Son of the South



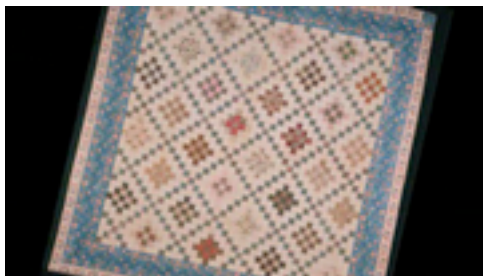
Map of 17th-century London  
Photo by Wencesclas Hollar



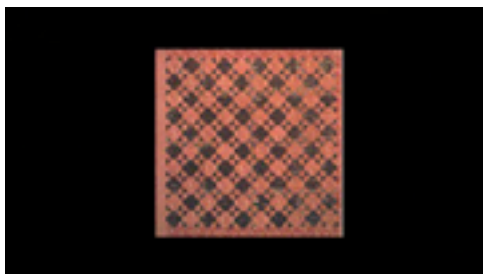
*Whole Cloth*  
Patience Harris  
c. 1820  
97 ½" x 97 ½"  
Item number 2005.16-5174  
New England Quilt Museum  
Lowell, Massachusetts  
[www.nequiltmuseum.org](http://www.nequiltmuseum.org)  
More info at [www.quiltindex.org](http://www.quiltindex.org)



*English Center Medallion*  
Maker unknown  
c. 1840-1850  
Cotton  
104" x 104"  
Photo by Geoffrey Carr  
Collection of Eleanor Bingham Miller



*Paper-template Pieced Quilt*  
Ann Ashburn Lucas (Mrs. Jonathan Lucas)  
Early 19th century  
Cotton or calico, muslin  
105" x 110"  
Item number 2001.064  
The Charleston Museum  
Charleston, South Carolina  
[www.charlestonmuseum.org](http://www.charlestonmuseum.org)



*Shoo-fly*  
Maker unknown  
c. 1853  
Cotton or calico, chintz, muslin  
83" x 97"  
Item number 1942.007.003  
The Charleston Museum  
Charleston, South Carolina  
[www.charlestonmuseum.org](http://www.charlestonmuseum.org)



*Flying Geese*

Maker unknown

c. 1830

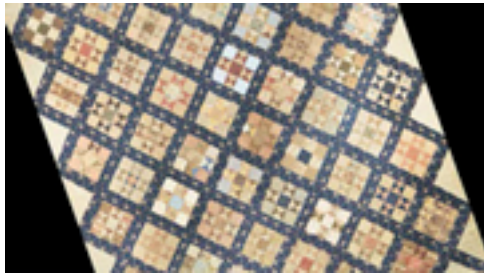
Cotton

98 ½" x 101"

From *The American Quilt*, Roderick Kiracofe,  
Clarkson Potter, 2004

Photo by Sharon Risedorph

Courtesy of Roderick Kiracofe



*Ohio Star* (detail)

Maker unknown

1860-1880

Cotton or calico, muslin

95" x 106"

Item number 1983.157

The Charleston Museum

Charleston, South Carolina

[www.charlestonmuseum.org](http://www.charlestonmuseum.org)



*Autograph Cross* (detail)

Maker unknown

c. 1840-1860

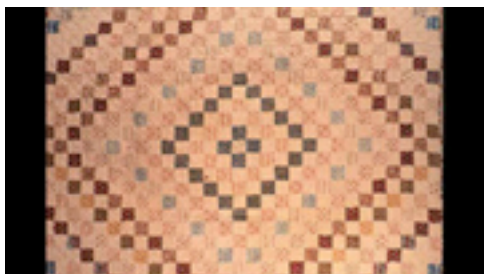
Cotton

95" x 97 ½"

From *The American Quilt*, Roderick Kiracofe,  
Clarkson Potter, 2004

Photo by Sharon Risedorph

Courtesy of Roderick Kiracofe



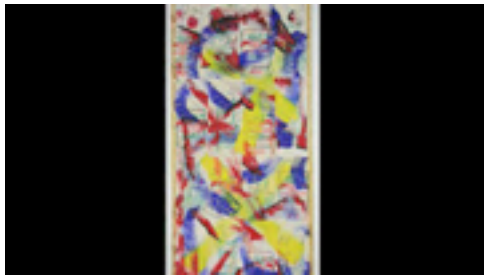
*Early Trip Around the World*

Center square embroidered in cross stitch

"Mary Ann Margaret August 23, 1819"

72" x 72"

Courtesy of Victoria Hoffman



*Graffiti*

Kim LaPolla

2007

Spanish rice sacks, cotton thread, acrylic paint, metallic raffia ribbon

31" x 14 ½"

[www.CrazyByDesign.com](http://www.CrazyByDesign.com)



*Woman to Woman*

Adrienne Yorinks

2009

80" x 60"

Photo by D. James Dee

[www.adrienneyorinks.com](http://www.adrienneyorinks.com)



*Fairy Beaver Cope*

Anne Kingsbury

1983

Clay, leather, antique braid, silk

48" x 36"

[www.woodlandpattern.org](http://www.woodlandpattern.org)



*Jesus Get Your Gun*

Shawn Quinlan

*Associated Artists of Pittsburgh 95th Annual Exhibition*

May 14 - June 19, 2005

Andy Warhol Museum

Pittsburgh, Pennsylvania

Photo by Shawn Quinlan

[www.shawnquinlan.com](http://www.shawnquinlan.com)



*Obama*

Adrienne Yorinks

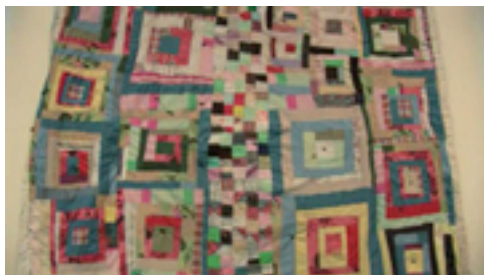
2009

53" x 50"

Photo by D. James Dee

[www.adrienneyorinks.com](http://www.adrienneyorinks.com)

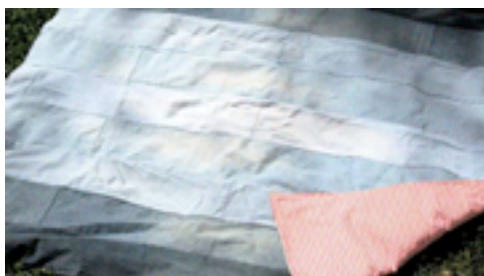




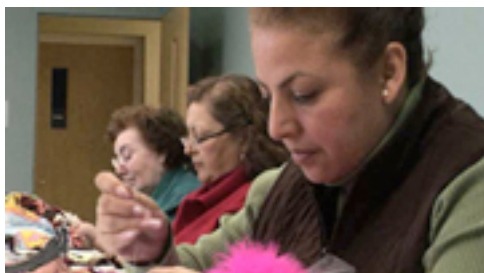
*Housetop variation with Postage Stamp center row*  
 Irene Williams  
 1965  
 Cotton, cotton/polyester blend, polyester double knit, wool, corduroy  
 75" x 78 "  
 B-roll by Alan Miller  
 Purchased with funds provided by Dana and Marc Katz  
 Item number 2007.6  
 Indianapolis Museum of Art  
 Indianapolis, Indiana  
[www.imamuseum.org](http://www.imamuseum.org)



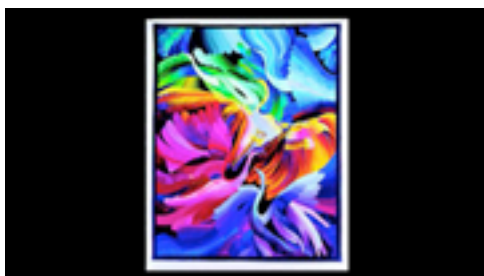
Quilt in progress  
 B-roll by Alan Miller



Quilt  
 B-roll by Stephen Kertis  
 Locust Grove Antiques Market  
 Louisville, Kentucky  
[www.locustgrove.org](http://www.locustgrove.org)

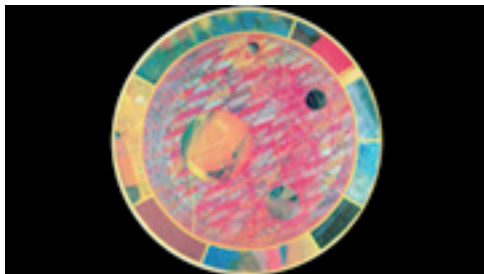


Women quilting  
 B-roll by Alan Miller  
 National Museum of Mexican Art  
 Chicago, Illinois  
[www.nationalmuseumofmexicanart.org](http://www.nationalmuseumofmexicanart.org)



*Birds of a Different Color*  
 Caryl Bryer Fallert  
 1999  
 Cotton  
 93" x 74"  
 The National Quilt Museum  
 Paducah, Kentucky  
[www.bryerpatch.com](http://www.bryerpatch.com)

[www.quiltmuseum.org](http://www.quiltmuseum.org)  
More info at [www.quiltindex.org](http://www.quiltindex.org)



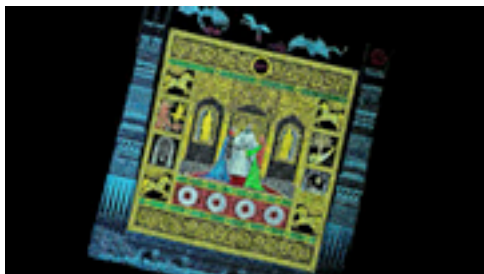
*Millennium Portal: Baptism of Fire #1*

Arturo Alonzo Sandoval

1994

Punch computer tape, paint, canvas, mylar, monofilament, color threads, rag paper, fabric backed and mounted on masonite

[www.arturoart.com](http://www.arturoart.com)



*Tribute to Tolkien*

Sue McCarty

2009

85" x 90"

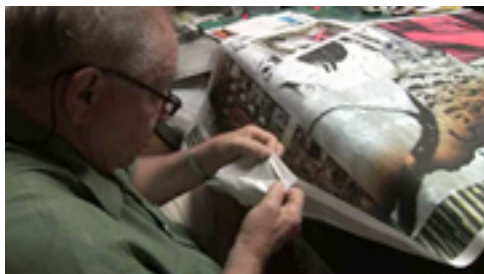
Item number 2010.03.01

The National Quilt Museum

Paducah, Kentucky

[www.quiltmuseum.org](http://www.quiltmuseum.org)

More info at [www.quiltindex.org](http://www.quiltindex.org)



C. J. Pressma

B-roll by Alan Miller

C. J. Pressma studio

[www.cjpressma.com](http://www.cjpressma.com)



*Prism, La Briere Series*

Judith Content

2007

Silks

91" x 53"

Collection of John M. Walsh, III



*Bow Ties*

Maker unknown

c. 1880

Cotton

70" x 66"

Photo by Focal Point

Collection of Shelly Zegart

3 details follow



Historic photo

In upcoming book by Janet E. Finley, Schiffer Publishing,  
Atglen, Pennsylvania; late 2012  
Collection of Janet E. Finley

*Bow Ties* again



*Kentucky Quilt #2*

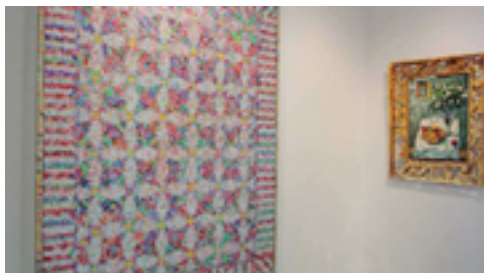
Tom Pfannerstill

1998

Found cigarette packages on canvas

64" x 76"

2 details follow



*Pineapple Log Cabin*

Tom Pfannerstill

1996

Aluminum cans on panel

68" x 84"

3 images follow



*LeMoyne Star with Pots of Flowers*

Maker unknown

c. 1860-1880

Cotton

97" x 77 1/2"

From *The American Quilt*, Roderick Kiracofe,  
Clarkson Potter, 2004

Photo by Sharon Risedorph

Courtesy of Roderick Kiracofe



*Star of Bethlehem or Lone Star*

Hannah Huxley

1832

Cotton

112" x 108"

From *The American Quilt*, Roderick Kiracofe,  
Clarkson Potter, 2004

Photo by Sharon Risedorph

Courtesy of Roderick Kiracofe



From *Mosaïques d'étoffes à la recherche de l'hexagone*

2003

Page 51

Musée des Traditions et Arts Normands

Exhibition curated and catalog prepared by Janine Janniere

Courtesy of Janine Janniere



From *Mosaïques d'étoffes à la recherche de l'hexagone*

2003

Page 55

Musée des Traditions et Arts Normands

Exhibition curated and catalog prepared by Janine Janniere

Courtesy of Janine Janniere



From *Mosaïques d'étoffes à la recherche de l'hexagone*

2003

Page 58

Musée des Traditions et Arts Normands

Exhibition curated and catalog prepared by Janine Janniere

Courtesy of Janine Janniere



From *Mosaïques d'étoffes à la recherche de l'hexagone*

2003

Page 56

Musée des Traditions et Arts Normands

Exhibition curated and catalog prepared by Janine Janniere

Courtesy of Janine Janniere





*Poppy*

Marie D. Webster

1909

Linen appliquéd on cotton

91" x 82"

Webster Collection, Gift of Mrs. Gerrish Thurber

Item number TR8341

Indianapolis Museum of Art

Indianapolis, Indiana

[www.imamuseum.org](http://www.imamuseum.org)



*Hand Tools*

B. J. Adams

Hand-dyed and commercial cotton, silk and wool, cotton poly and metallic threads, acrylic paint

46" x 75"

Collection of John M. Walsh, III

[www.bjadamsart.com](http://www.bjadamsart.com)



Quilts on display

B-roll by Alan Miller

American Quilter's Society Show and Contest

Paducah, Kentucky

[www.americanquilter.com](http://www.americanquilter.com)



*Quilts: An American Romance*

May 12 - 17, 1980

Somerset Mall

Troy, Michigan

Sandra Mitchell Archives

Courtesy of Shelly Zegart



*Quilts: An American Romance*

May 12 - 17, 1980

Somerset Mall

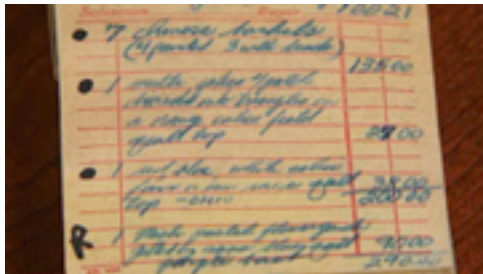
Troy, Michigan

Sandra Mitchell Archives

Courtesy of Shelly Zegart



Douglas Dawson Gallery  
Chicago, Illinois  
[www.douglasdawson.com](http://www.douglasdawson.com)



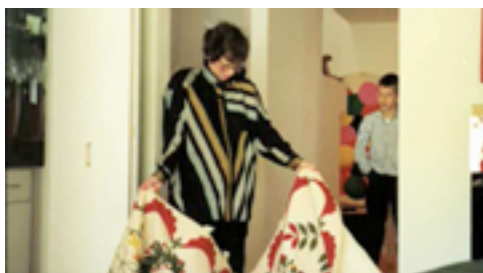
Sandra Mitchell Archives  
Courtesy of Shelly Zegart



*Marseille: White Corded Quilting* exhibition  
November 13, 2010 - May 22, 2011  
From the Berenson Collection  
The International Quilt Study Center & Museum  
University of Nebraska-Lincoln  
Lincoln, Nebraska  
[www.quiltstudy.org/exhibitions](http://www.quiltstudy.org/exhibitions)



Shelly Zegart Archives



Shelly Zegart Archives



*Quilts: An American Romance*  
May 12 - 17, 1980  
Somerset Mall  
Troy, Michigan  
Sandra Mitchell Archives  
1980  
Courtesy of Shelly Zegart



*Quilts: An American Romance*  
May 12 - 17, 1980  
Somerset Mall  
Troy, Michigan  
Sandra Mitchell Archives  
Courtesy of Shelly Zegart



*Quilts: An American Romance*  
May 12 - 17, 1980  
Somerset Mall  
Troy, Michigan  
Sandra Mitchell Archives  
Courtesy of Shelly Zegart



*Quilts: An American Romance*  
May 12 - 17, 1980  
Somerset Mall  
Troy, Michigan  
Sandra Mitchell Archives  
Courtesy of Shelly Zegart



Shelly Zegart Archives





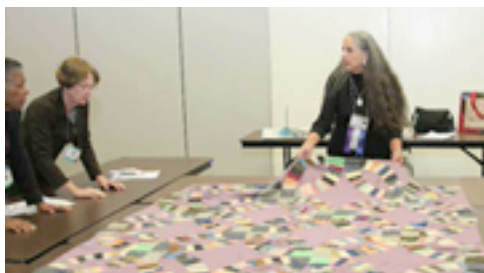
*Quilts: An American Romance*  
May 12 – 17, 1980  
Somerset Mall  
Troy, Michigan  
Sandra Mitchell Archives  
Courtesy of Shelly Zegart



Shelly Zegart Archives



*Heart of Country Antique Show*  
Nashville, Tennessee  
B-roll by Alan Miller

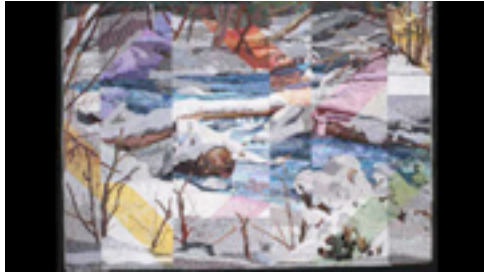


Quilt class  
Quilts, Inc. and International Quilt Festival  
Houston, Texas  
[www.quilts.com](http://www.quilts.com)



Exhibition  
Quilts, Inc. and International Quilt Festival  
Houston, Texas  
[www.quilts.com](http://www.quilts.com)





*Rio Hondo*

Katie Pasquini Masopust

1994

Cotton, cotton blends, satin, wool

60" x 46"

Collection of John M. Walsh, III

[www.katiepm.com](http://www.katiepm.com)